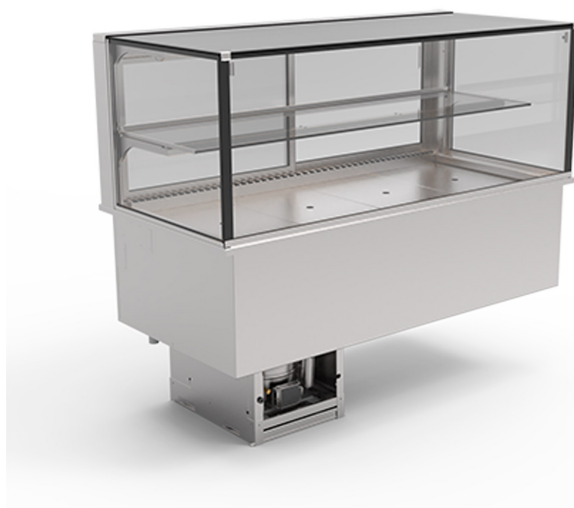


## Kølet display Metos Green GE-145-54-E-R290



### Produktdata

Varenummer	4321513
Varenavn	Kølet display Metos Green GE-145-54-E-R290
Størrelse	1450 × 695 × 540/1220 mm
Vægt	250,000 kg
Kapasitet	4 x GN1/1
Teknisk informasjon	230 V, 10 A, 0,319 kW, 1NPE, 50 Hz, 70 dB Avløp tilkobling: ø 30 mm
Energiklasse	B
Kjølemedie	R290
Kjøleeffekt, W	490

### Beskrivelse

Metos Green GE-145-54-E is a recessable into furniture, seller-served chilled display, designed for use under demanding conditions, with a width of 1450 mm and height of 540 mm. The simple angular shape of the chilled display highlights the products being sold.

The display's tempered glass side panels, the glass shelf and the bright LED lighting for shelves and the cold tub make products being sold highly visible. In addition, the front glass of the display serviced by the seller provides a panoramic view of the products inside. The seller's side is equipped with handy sliding doors. The glass shelf can be regulated +/-25 mm and can be angled, which simplifies product selection. A 215 mm adjustable height cooled tub with Gastronorm dimensioning.



A great deal of attention has been paid to simplifying the cleaning of the Metos Green GE-145-54-E display. The display portion lacks virtually any seams and is easy to wipe clean. The tub's plates, which are made of stainless steel, can be removed and lifted up in order to clean the evaporator element. In addition, the display is equipped with an auto-defrost function, the melting water from which is directed to the grey water system. For those installation locations where it is not possible to connect the display to the grey water system, an evaporation tank is included as an accessory.

The display is equipped with air cooled chilling, digital temperature control and ventilator speed regulator. Temperature can be regulated between +2 °C...+4 °C. The front glass, side glass panels and the glass shelf are made from tempered glass. The substructure is made from stainless steel and insulation is polyurethane.

- recessable into furniture (cut out size 1390 x 670 mm)
  - shelf and tub lighting
  - tempered front glass, side panels and shelf
  - sales space 1,42 m<sup>2</sup>
  - temperature can be regulated between +2 °C...+4 °C.
  - climate class 3M1
  - digital temperature regulation
  - ventilator speed regulator
- EXTRA ACCESSORIES (can be ordered separately):
- base; Open stand or Tubular body stand
  - price tag frame
  - door locking
  - evaporation tank; Manual or Electrical 1000W
  - remote cooled model